

**CALLN HOSTED CALL RECORDING
NETGEAR GS105E SWITCH SETUP**

Created by Paul Johansen

15 November 2017

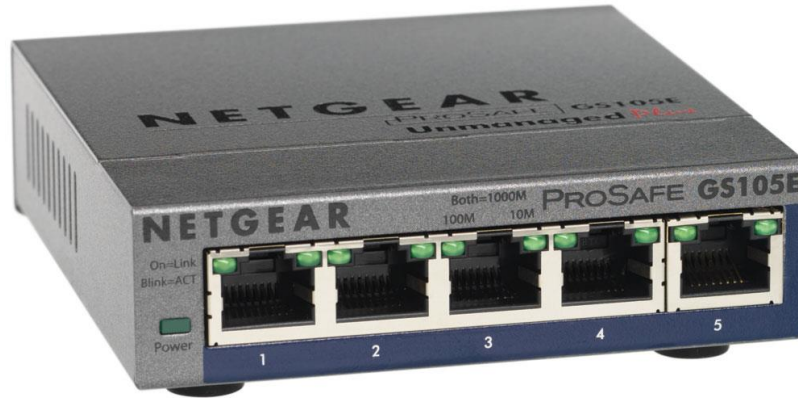
Version 1.0.1

Table of Contents

1. Introduction	3
2. Connectivity	3
3. Configuration	4
3.1. Logging in	4
3.2. Setting up the port mirror	5

1. Introduction

This document describes how to configure your NetGear ProSafe Plus GS105E switch for port mirroring.



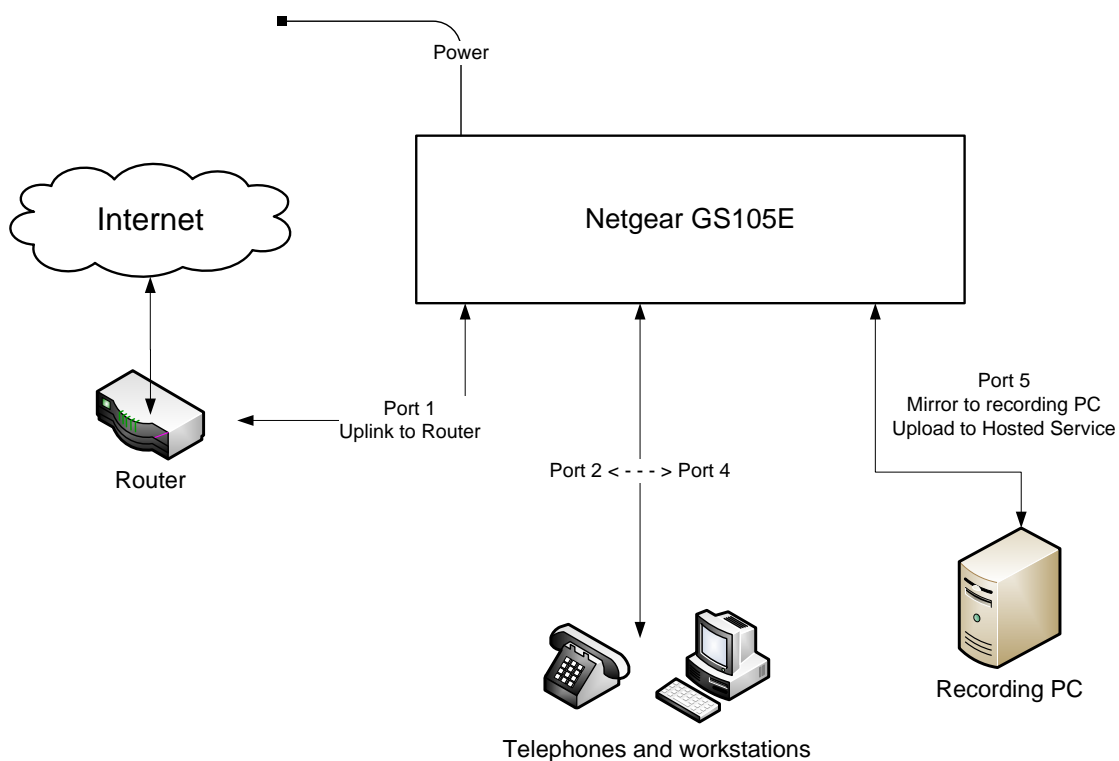
2. Connectivity

The unit will be configured to mirror all of the network traffic to/from Port 1 onto Port 5.

Connect your internet router to Port 1.

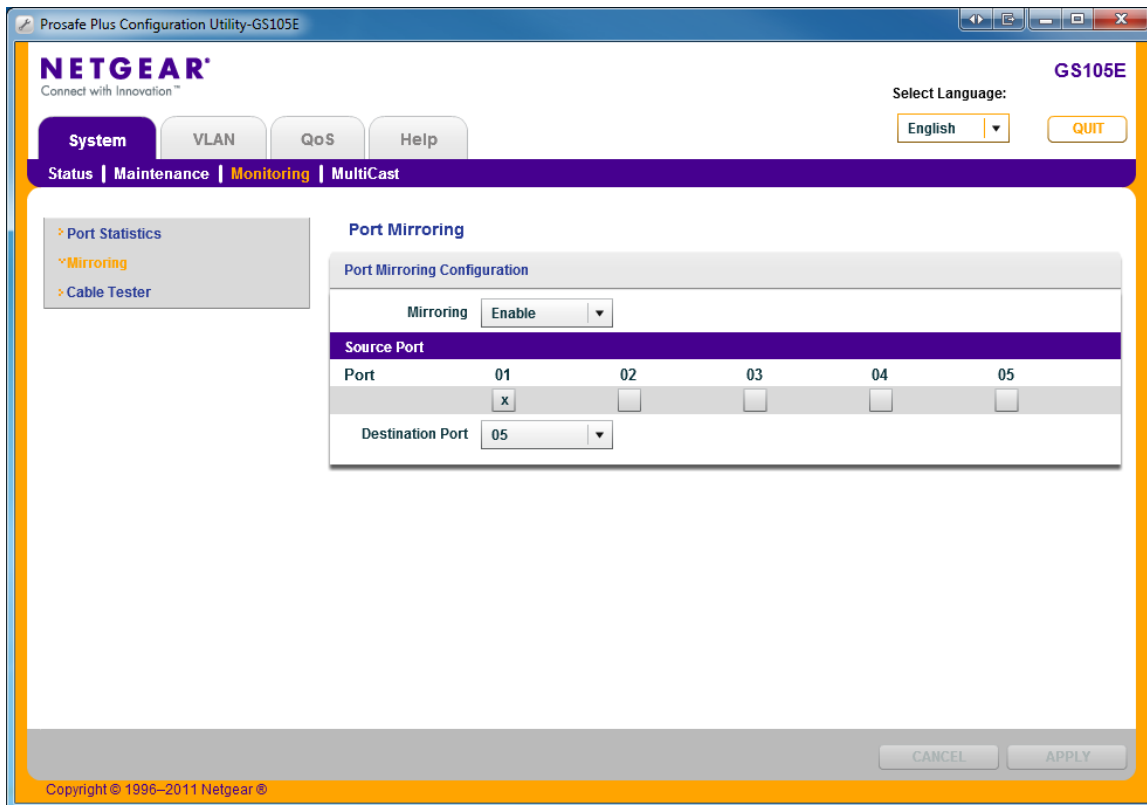
Connect your computer which is running the CallN software to Port 5.

Please Note: Port 5 is able to be used for call recording as well as internet connectivity as the port is not dedicated just for receiving the mirrored traffic.



3.2. Setting up the port mirror

1. From the menu items, select System / Monitoring / Mirroring.



2. Configure the Port Mirroring Configuration with the following settings;-
Mirroring: Enable
Source Port: 01
Destination Port: 05
3. Click 'Apply'.

The switch is now configured and ready to use.