



# CALLN HOSTED CALL RECORDING CISCO SF300-08 PORT MIRRORING SETUP

Created by Paul Johansen

21 December 2017

Version 1.0.0

---

## Table of Contents

<b>1. Introduction .....</b>	<b>3</b>
<b>2. Connectivity.....</b>	<b>4</b>
<b>3. Configuration .....</b>	<b>5</b>
<b>3.1. Logging in .....</b>	<b>5</b>
<b>3.2. Setting up the port mirror .....</b>	<b>6</b>
<b>3.3. Saving the new configuration .....</b>	<b>7</b>

# 1. Introduction

This document describes how to configure your Cisco SF300-08 switch for port mirroring.



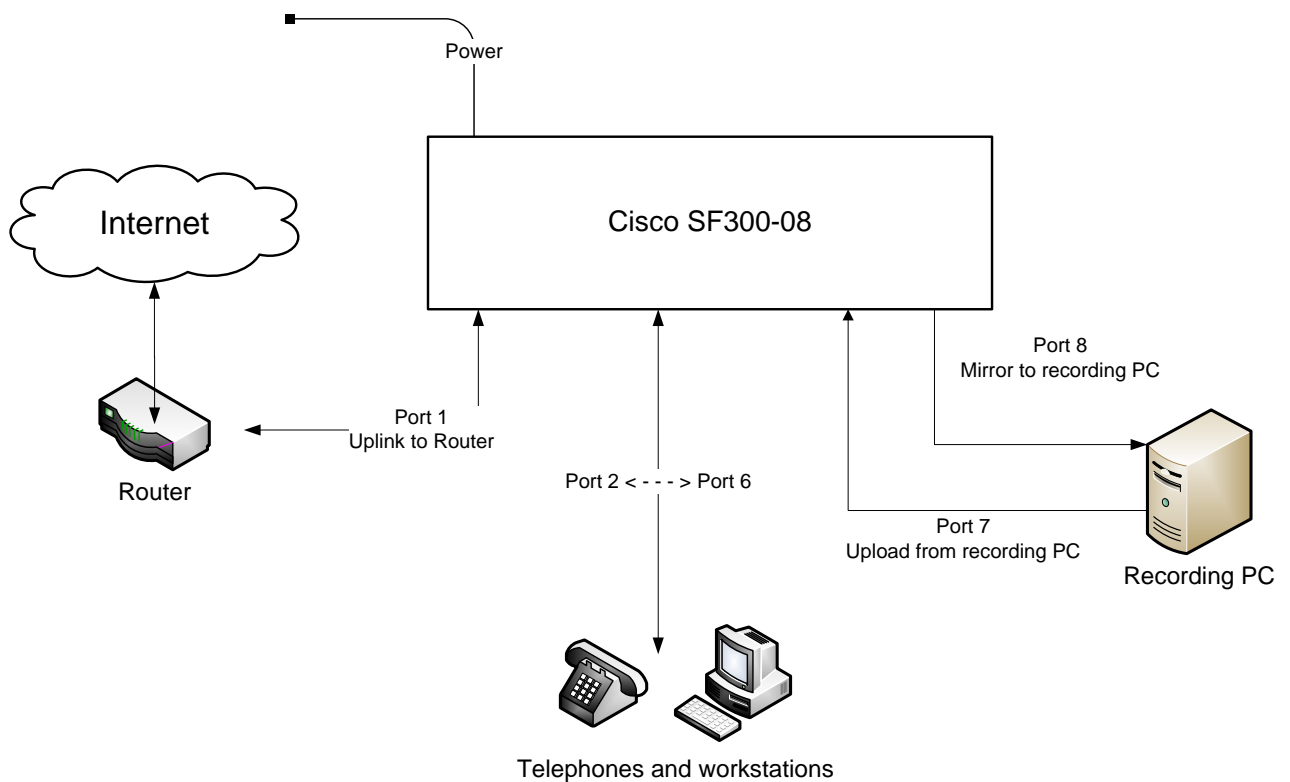
## 2. Connectivity

The unit will be configured to mirror all traffic to/from Port 1 onto Port 8.

Connect your internet router to Port 1.

Connect your computer which is running the CallIN software to Port 8 for capture.  
Connect your computer which is running the CallIN software to Port 7 for internet connectivity.

**Please Note:** Port 8 will NOT be able to be used for internet connectivity but only as a dedicated receiver of the mirrored traffic.



## 3. Configuration

### 3.1. Logging in

The unit is configurable via a web interface.

By default the unit is shipped with the static IP address of 192.168.1.254.

Connect a computer to the unit via an Ethernet cable and configure the computer with a static Ethernet address in the 192.168.1.X subnet. E.g. 192.168.1.1.

Connect to the web administration portal via the URL <http://192.168.1.254>



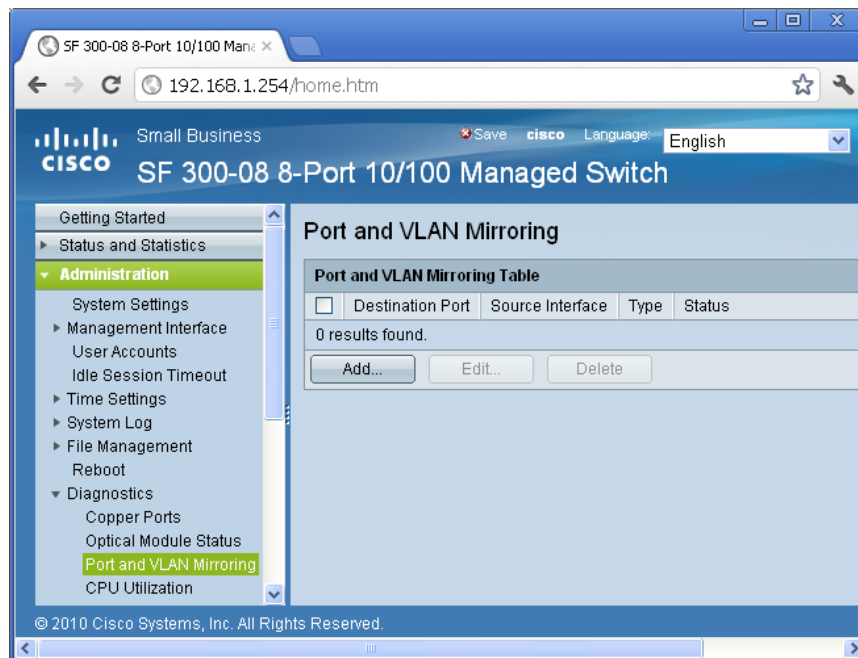
The factory default login credentials are;-

Username: cisco

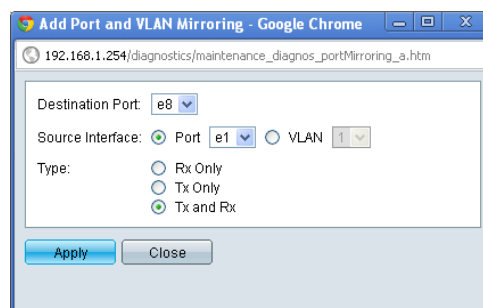
Password: cisco

## 3.2. Setting up the port mirror

Within the left hand menu, select Administration / Diagnostics / Port and VLAN Mirroring.



Click 'Add'



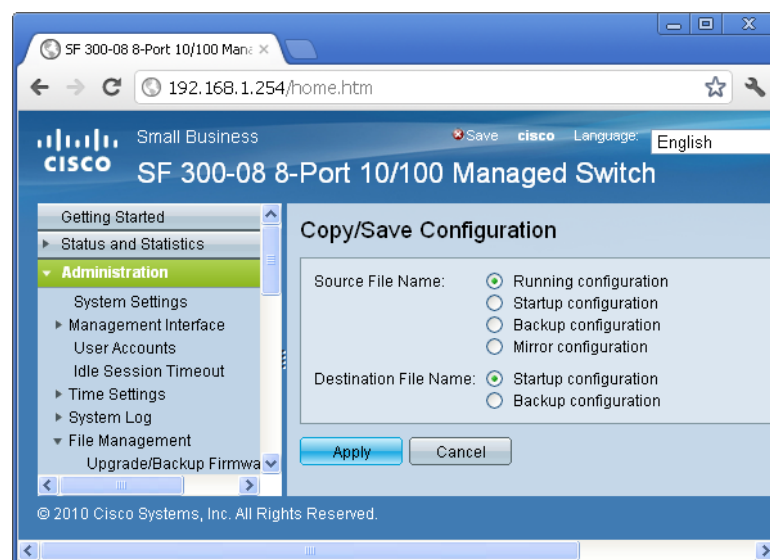
Configure with the settings;-  
 Destination Port: e8  
 Source Interface Port: e1  
 Type: Tx and Rx

### 3.3. Saving the new configuration

The Cisco unit requires any updated configuration to be written to NVRAM as a separate task.



Click on the 'Save' link at the top right of the web UI.



Make sure the following is selected;-  
 Source File Name: Running Configuration  
 Destination File Name: Startup configuration  
 Click 'Apply'.