



CALLN HOSTED CALL RECORDING CISCO SG300-10 PORT MIRRORING SETUP

Created by Paul Johansen

21 December 2017

Version 1.0.0

Table of Contents

1. Introduction	3
2. Connectivity.....	4
3. Configuration	5
3.1. Logging in	5
3.2. Setting up the port mirror	6
3.3. Saving the new configuration	7

1. Introduction

This document describes how to configure your Cisco SG300-10 switch for port mirroring.



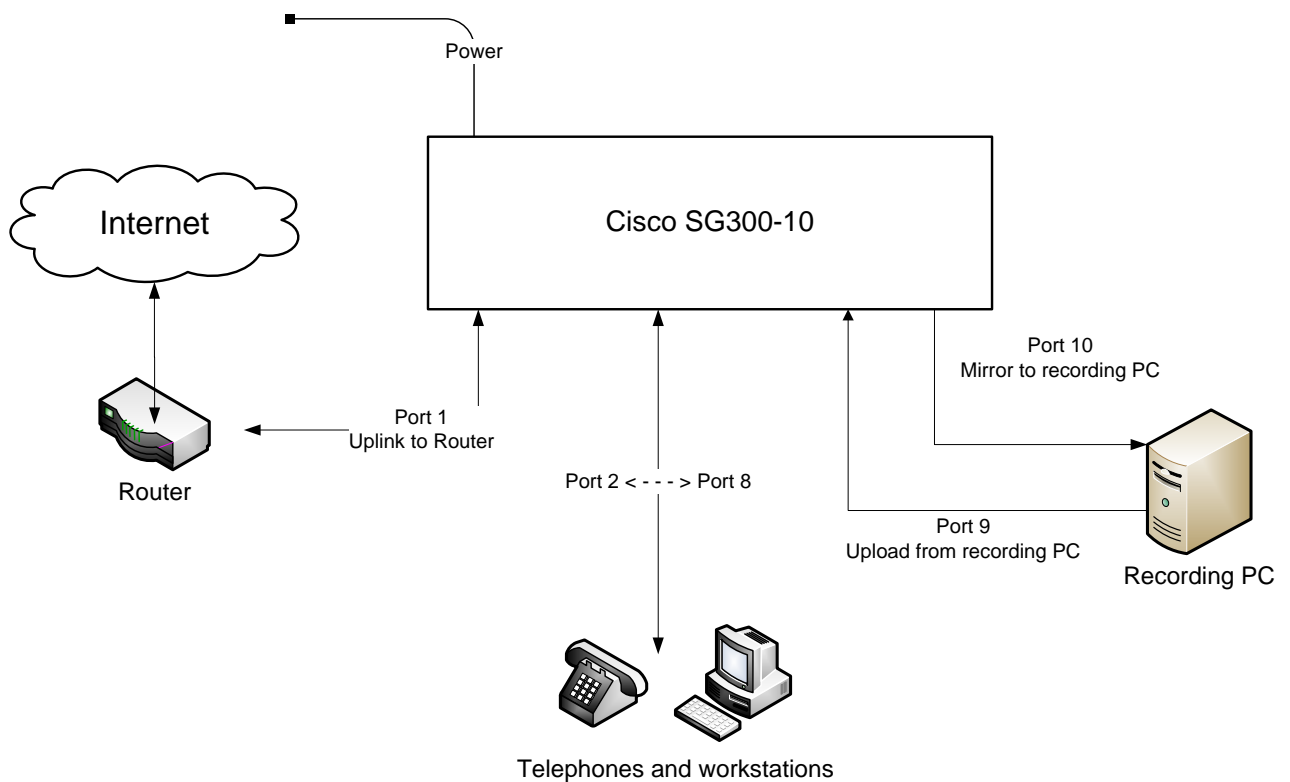
2. Connectivity

The unit will be configured to mirror all traffic to/from Port 1 onto Port 10.

Connect your internet router to Port 1.

Connect your computer which is running the CallIN software to Port 10 for capture.
Connect your computer which is running the CallIN software to Port 9 for internet connectivity.

Please Note: Port 10 will NOT be able to be used for internet connectivity but only as a dedicated receiver of the mirrored traffic.



3. Configuration

3.1. Logging in

The unit is configurable via a web interface.

By default the unit is shipped with the static IP address of 192.168.1.254.

Connect a computer to the unit via an Ethernet cable and configure the computer with a static Ethernet address in the 192.168.1.X subnet. E.g. 192.168.1.1.

Connect to the web administration portal via the URL <http://192.168.1.254>



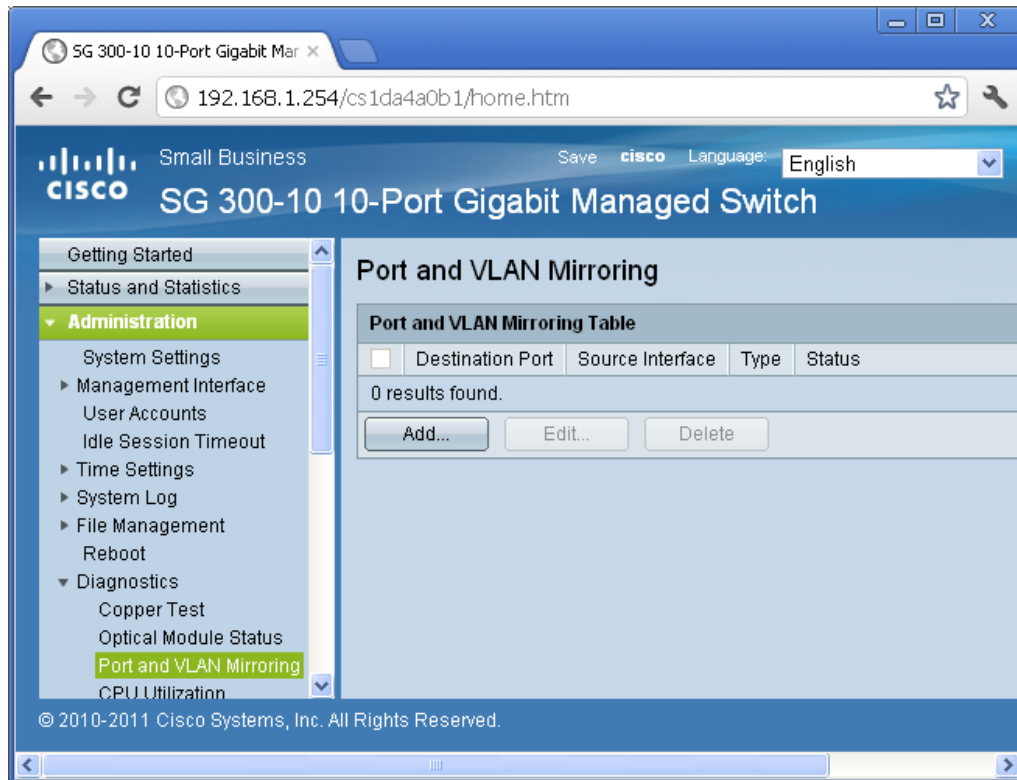
The factory default login credentials are;-

Username: cisco

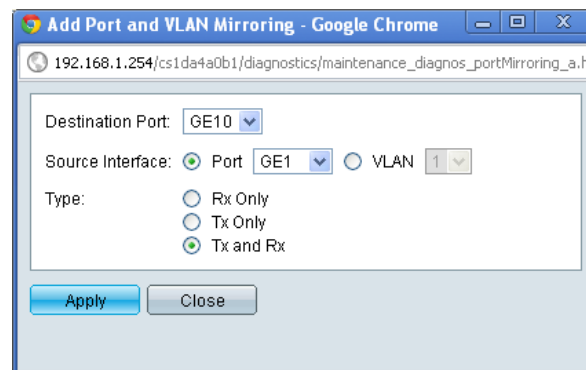
Password: cisco

3.2. Setting up the port mirror

Within the left hand menu, select Administration / Diagnostics / Port and VLAN Mirroring.



Click 'Add'



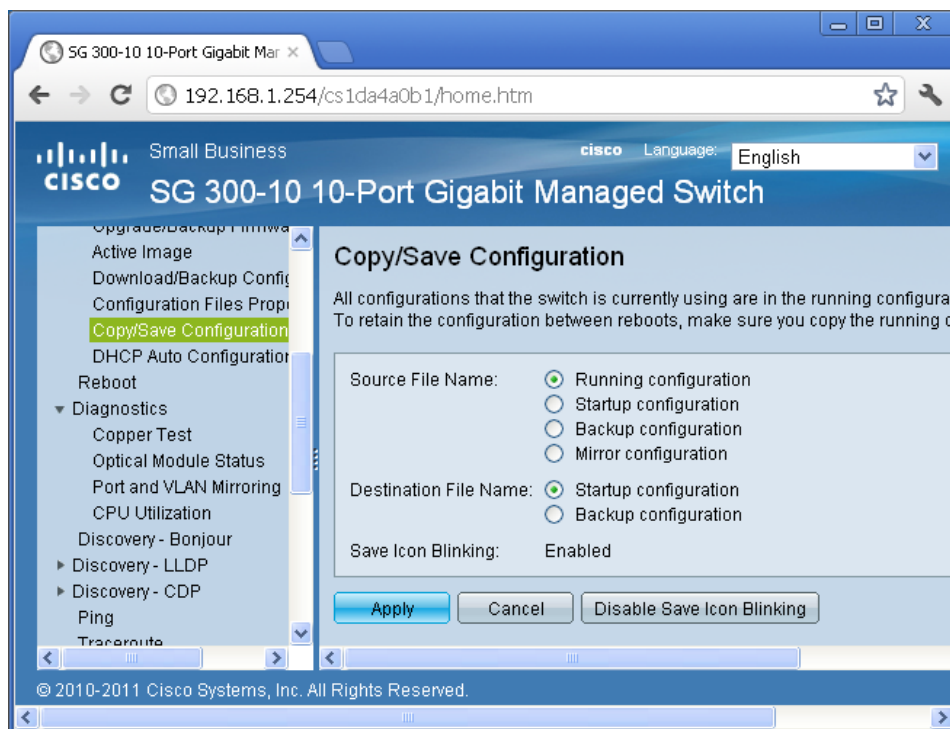
Configure with the settings;-
 Destination Port: GE10
 Source Interface Port: GE1
 Type: Tx and Rx

3.3. Saving the new configuration

The Cisco unit requires any updated configuration to be written to NVRAM as a separate task.



Click on the 'Save' link at the top right of the web UI.



Make sure the following is selected;-
 Source File Name: Running Configuration
 Destination File Name: Startup configuration
 Click 'Apply'.