

**CALLN HOSTED CALL RECORDING
HP 1700-8 PORT MIRRORING SETUP**

Created by Paul Johansen

15 November 2017

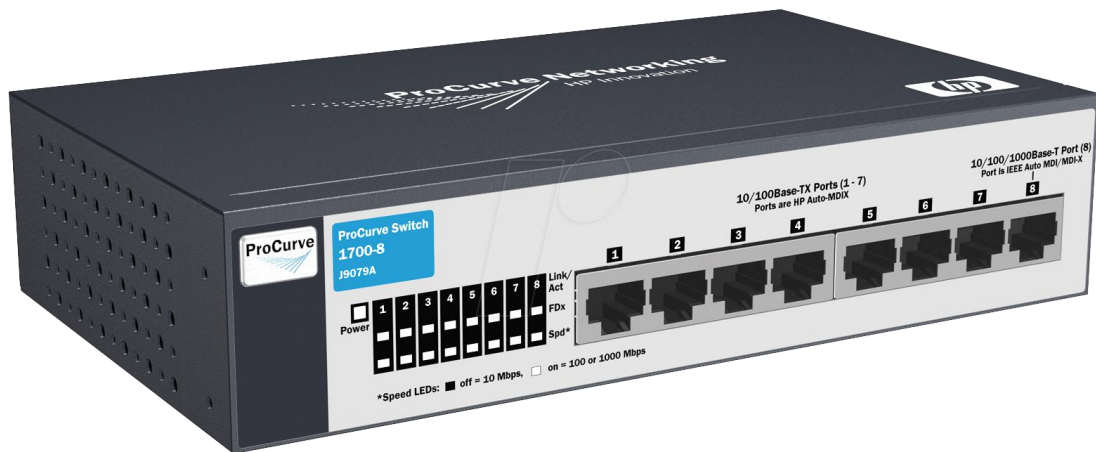
Version 1.0.1

Table of Contents

1. Introduction	3
2. Connectivity	4
3. Configuration	5
3.1. Logging in	5
3.2. Setting up the port mirror	6

1. Introduction

This document describes how to configure your HP 1700-8 switch for port mirroring.



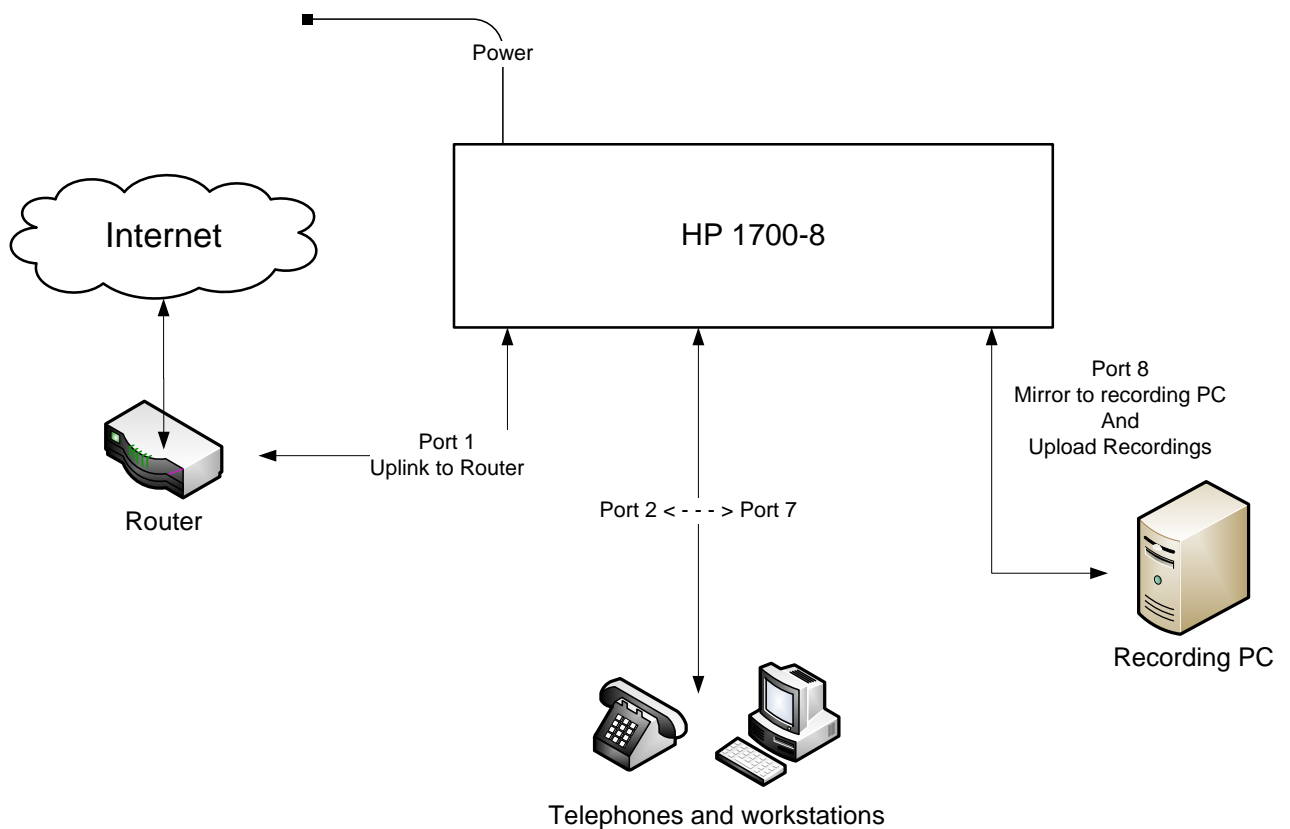
2. Connectivity

The unit will be configured to mirror all traffic to/from Port 1 onto Port 8.

Connect your internet router to Port 1.

Connect your computer which is running the CallN software to Port 8.

Please Note: Port 8 will be able to be used for internet connectivity as well as the receiver of the mirrored traffic.



3. Configuration

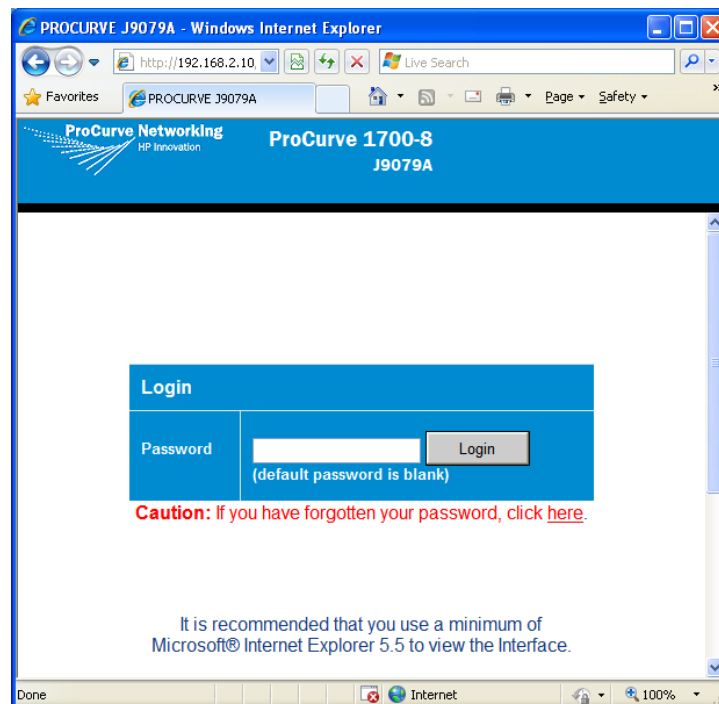
3.1. Logging in

The unit is configurable via a web interface.

By default the unit is shipped with the static IP address of 192.168.2.10.

Connect a computer to the unit via an Ethernet cable and configure the computer with a static Ethernet address in the 192.168.2.X subnet. E.g. 192.168.2.1.

Connect to the web administration portal via the URL <http://192.168.2.10>

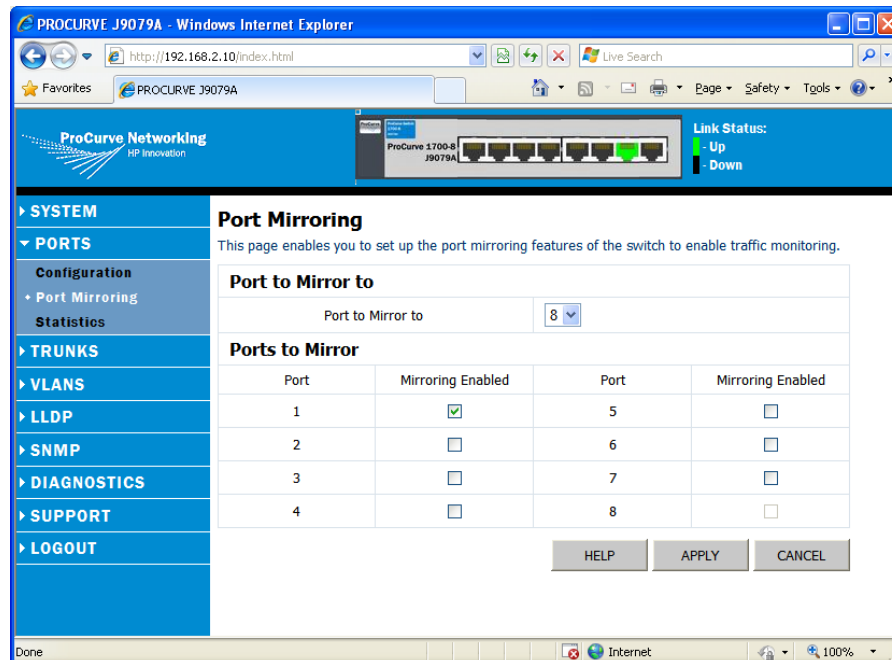


Login with the default credentials of;-

Password: <empty>

3.2. Setting up the port mirror

Within the left hand menu, select Ports / Port Mirroring.



Configure with the settings;-

Port to Mirror to: 8

Port 1 Mirroring Enabled: ✓

Click 'Apply'